

Camera & Software Vision Package

PC VISION SYSTEM FJ SERIES

Create your ideal system



» Flexible vision system

» **Easy customization**

» Highly robust cutting-edge algorithms

Quick Installation on Your PC-based Systems

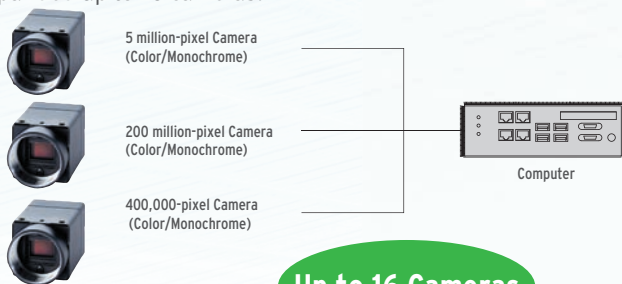
Omron now provides our machine vision solution developed for the manufacturing floor as a package that can be installed on PC-based systems.

Cameras

Connect quickly and Expand easily

GigE Cameras

Six different GigE cameras which has compatibility with FJ software are available. They can realize quick connectivity and stable working. It can be expanded up to 16 cameras.



Measurement Controls

Simple programming and quick testing

Menu driven Software

More than 100 proven processing items from OMRON, have a GUI developed for the manufacturing floor in a long factory automation experiences. This greatly reduces program development work in comparison with library based programming.



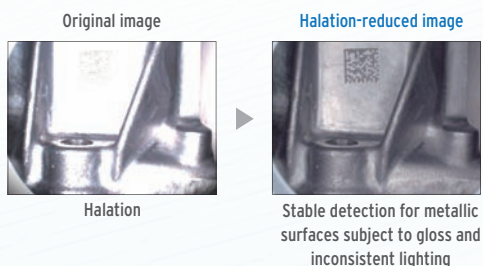
Computer with Application Software installed.

Algorithms

Highly robust measurement algorithms.

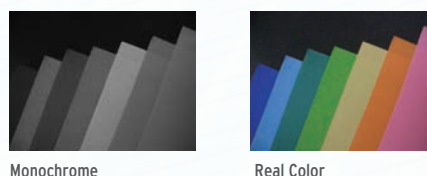
HDR Sensing

The dynamic range has been increased by up to 5,000 times to enable clear imaging of inspection objects that was previous not possible due to lighting inconsistencies or halation.



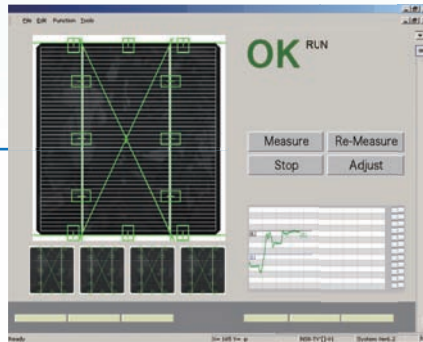
Real Color Sensing

Inspecting real color data enables detecting minute differences in colors that are difficult to detect with color gray conversion or filtering.



GUI Design

Quick development original GUIs

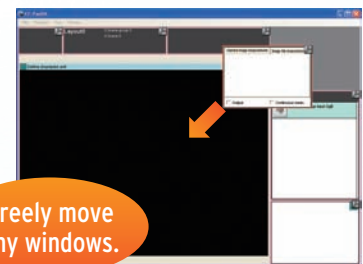


Operation GUI Example

(This example was created with FJ's Application Producer and Visual Studio®.)

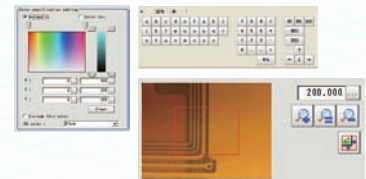
Layout Editor

You can easily customize the positions, sizes, and functions of windows and buttons based on OMRON's GUIs, which are highly appraised for being easy to use and easy to understand.



Wide Range of GUI Modules

You can use a lot of custom controls and sample codes implemented in Application Producer to create your own GUIs easily.



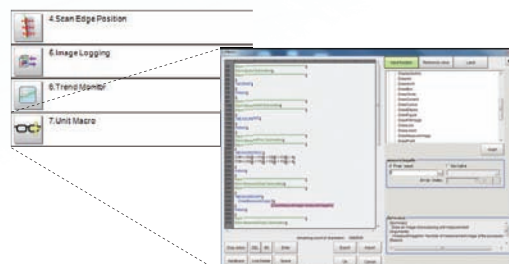
Programming

Implement own program

You can implement your own program as original processing item with using Visual Studio® and Application Producer easily.

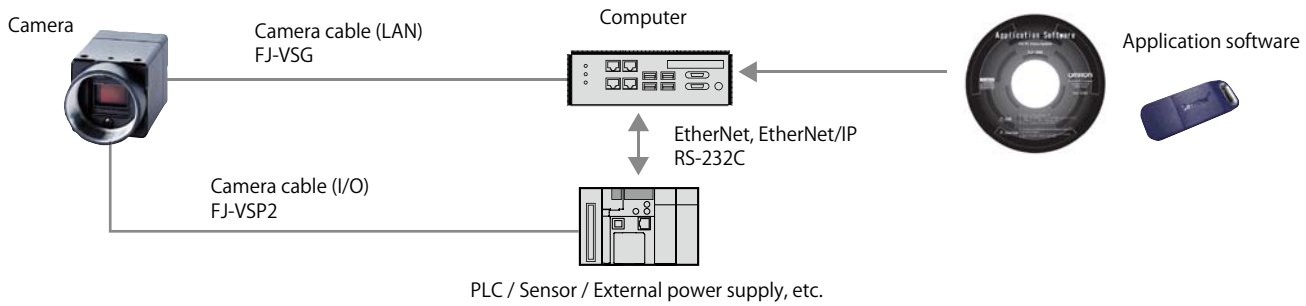
Macro Processing Items

You can implement even advanced calculations on the processing flow as a Macro processing items easily. It allow you to edit the program on the controller and the compiling is not necessary. So you can develop and adjust the system quickly.



·Microsoft® Visual Studio® and Windows are either registered trademarks or trademarks of Microsoft Corporation in the United States and/or other countries.
·Intel and the Intel logo are trademarks of Intel Corporation in the U.S. and/or other countries.
·Other company names and product names in this document are the trademarks or registered trademarks of their respective companies.

System configuration



Ordering Information

	Type			Model	Operating environment
Camera & Software Vision Package • Application software x 1 license (CD-ROM x 1, Dongle key x 1) • Camera x 1 unit		400,000 pixels	Monochrome	FJ-SG2-S	<ul style="list-style-type: none"> • CPU: Intel Pentium Processor (SSE2 or higher) • OS: Windows7 Professional (32/64bit) or Enterprise (32/64bit) or Ultimate (32/64bit), Windows 10 Pro (32/64bit) or Enterprise (32/64bit) • .NET Framework: .NET Framework 3.5 or higher • Memory: At least 2 GB RAM • Available disk space: At least 2 GB • Camera interface: Ethernet 1000BASE-T • Display: XGA (1024 x 768), True Color (32-bit) or higher • Optical drive: CD/DVD drive
		400,000 pixels	Color	FJ-SCG2-S	
		2 million pixels	Monochrome	FJ-S2MG2-S	
		2 million pixels	Color	FJ-SC2MG2-S	
		5 million pixels	Monochrome	FJ-S5MG2-S	
		5 million pixels	Color	FJ-SC5MG2-S	
Camera (Single unit)		400,000 pixels	Monochrome	FJ-SG2	
		400,000 pixels	Color	FJ-SCG2	
		2 million pixels	Monochrome	FJ-S2MG2	
		2 million pixels	Color	FJ-SC2MG2	
		5 million pixels	Monochrome	FJ-S5MG2	
		5 million pixels	Color	FJ-SC5MG2	
Tripod Mount (Optional adapter for fastening the camera with tripod screws)				TP-KWA	
Camera cable (LAN)		Cable length: 3 m, 5 m, 10 m, 20 m, 40 m		FJ-VSG □M	
Camera cable (Power, I/O)		Cable length: 3 m, 5 m, 10 m		FJ-VSP2 □M	
Development environment Application Producer (Version 6.31)	Media only	CD-ROM		FH-AP1	<ul style="list-style-type: none"> • CPU: Intel Pentium Processor (SSE2 or higher) • OS: Windows 7 Professional (32/64bit) or Enterprise (32/64bit) or Ultimate (32/64bit), Windows 8 Pro (32/64bit) or Enterprise (32/64bit), Windows 8.1 Pro (32/64bit) or Enterprise (32/64bit), Windows 10 Pro (32/64bit) or Enterprise (32/64bit)W The following operating environment is required to use the camera FJ-S□□G2. Windows 7 Professional (32/64bit) or Enterprise (32/64bit) or Ultimate (32/64bit), Windows 10 (32/64bit) • .NET Framework: .NET Framework 3.5 SP1 or higher • Memory: At least 2 GB RAM • Available disk space: At least 2 GB • Browser: Microsoft® Internet Explorer 6.0 or later • Display: XGA (1024 x 768), True Color (32-bit) or higher • Optical drive: CD/DVD drive • The following operating environment is required to use the Camera FJ-S□□G2. Camera interface: Ethernet 1000BASE-T • The following software is required to customize the software: Microsoft® Visual Studio® 2008 Professional, or Microsoft® Visual Studio® 2010 Professional, or Microsoft® Visual Studio® 2010 Professional
	1 license			FH-AP1L	

Ratings and Performance

Camera

	FJ-SCG2/SG2	FJ-SC2MG2/S2MG2	FJ-SC5MG2/S5MG2
Imaging element	Progressive scan 1/2.9" CMOS	Progressive scan 1/1.7" CMOS	Progressive scan 2/3" CMOS
Effective pixels	720 (H) × 540 (V)	1,624 (H) × 1,240 (V)	2,448 (H) × 2,048 (V)
Frame rate	282.8 fps	54.6 fps	21.9 fps
I/F	Gigabit Ethernet (1 Gbit/s)		
Lens mount	C mount		

Refer to the datasheet for details.

Note: Do not use this document to operate the Unit.

OMRON Corporation Industrial Automation Company

Kyoto, JAPAN

Contact : www.ia.omron.com

Regional Headquarters

OMRON EUROPE B.V.

Wegalaan 67-69, 2132 JD Hoofddorp
The Netherlands
Tel: (31) 2356-81-300 Fax: (31) 2356-81-388

OMRON ELECTRONICS LLC

2895 Greenspoint Parkway, Suite 200
Hoffman Estates, IL 60169 U.S.A.
Tel: (1) 847-843-7900 Fax: (1) 847-843-7787

OMRON ASIA PACIFIC PTE. LTD.

438B Alexandra Road, #08-01/02 Alexandra
Technopark, Singapore 119968
Tel: (65) 6835-3011 Fax: (65) 6835-3011

OMRON (CHINA) CO., LTD.

Room 2211, Bank of China Tower,
200 Yin Cheng Zhong Road,
PuDong New Area, Shanghai, 200120, China
Tel: (86) 21-6023-0333 Fax: (86) 21-5037-2388

Authorized Distributor:

©OMRON Corporation 2011-2024 All Rights Reserved.
In the interest of product improvement,
specifications are subject to change without notice.

CSM_4_5

Cat. No. Q185-E1-06 1224 (0811)